



Missouri Weekly Influenza Surveillance Report 2021-2022 Influenza Season¹

Week 44: October 31, 2021 – November 6, 2021

All data are preliminary and may change as more reports are received.

Summary:

- The estimated influenza activity in Missouri is Sporadic².
- During Week 44, a total of 55 laboratory-positive³ influenza cases (24 influenza A, 28 influenza B, and 3 untyped) were reported. A season-to-date total of 243 laboratory-positive influenza cases (117 influenza A, 116 influenza B, and 10 untyped) have been reported in Missouri as of Week 44. The influenza type for reported season-to-date cases includes 48.2% influenza A, 47.7% influenza B, and 4.1% untyped. The percentage of respiratory specimens testing positive for influenza in Missouri laboratories reporting to the National Respiratory and Enteric Virus Surveillance System (NREVSS) remained low during Week 44 (Figure 5).
- Influenza-like illness (ILI) activity was at baseline for the hospital emergency room visit chief complaint data reported through ESSENCE. The reported percentage of visits for ILI through ESSENCE⁴ was 1.97 % (Figure 6).⁵
- One influenza-associated death has been reported in Missouri as of Week 44.⁶
- No influenza or ILI-associated outbreaks or school closures have been reported in Missouri as of Week 44.
- National influenza surveillance information is prepared by CDC and is included in the weekly FluView report, which is available online at <http://www.cdc.gov/flu/weekly/fluactivitysurv.htm>.

¹The 2021- 2022 influenza season begins CDC Week 40 (week ending October 9, 2021) and ends CDC Week 39 (week ending October 1, 2022).

²Sporadic is defined as: Small numbers of laboratory-confirmed influenza cases or a single laboratory-confirmed influenza outbreak has been reported, but there is no increase in cases of ILI.

³Laboratory-positive influenza includes the following test methods: rapid influenza diagnostic tests (antigen), reverse transcriptase polymerase chain reaction (RT-PCR) and other molecular assays, immunofluorescence antibody staining (Direct (DFA) or Indirect (IFA)), or viral culture.

⁴Reports from a small number of ESSENCE participating hospitals were not available for 11/5/2021 and 11/6/2021, therefore, all ESSENCE data for week 44 should, be considered preliminary.

⁵ILI is defined by ESSENCE as Emergency Department chief complaints for Influenza or (FeverPlus and (Cough or SoreThroat) and not NonILIFevers).

⁶All influenza-associated deaths became reportable in Missouri in 2016.

Surveillance Data:

Interactive Maps

The jurisdiction-specific influenza data are provided through interactive maps available at <https://arcg.is/G5LWv>.

Click on the jurisdiction to view the influenza data specific to that jurisdiction.

- Reported Laboratory-positive Influenza Cases by Influenza Type by Jurisdiction, CDC Week 44
- Reported Week-specific Rate per 100,000 Population, CDC Week 44
- Reported Laboratory-positive Influenza Cases by Influenza Type by Jurisdiction, Season-to-Date
- Reported Rate per 100,000 Population, Season-to-Date

Data Figures

Figure 1. Number of Laboratory-positive[†] Influenza Cases by Influenza Type, Missouri, CDC Weeks 42-44 (October 17, 2021 – November 6, 2021)^{*}

Influenza Type	Week 42	Week 43	Week 44	2021-2022* Season-to-Date
Influenza A	30	25	24	117
Influenza B	15	31	28	116
Influenza Unknown Or Untyped	0	1	3	10
Total	45	57	55	243

[†]Laboratory-positive influenza includes the following test methods: rapid influenza diagnostic tests (antigen), reverse transcriptase polymerase chain reaction (RT-PCR) and other molecular assays, immunofluorescence antibody staining (Direct (DFA) or Indirect (IFA)), or viral culture.

^{*}Influenza season begins with the week ending October 9, 2021 (CDC Week 40) Data Source: Missouri Health Information Surveillance System (WebSurv).

Figure 2. Number of Laboratory-positive[†] Influenza Cases and Case Rates by Age Group, Missouri, CDC Week 44 (October 31, 2021 – November 6, 2021)^{}**

Age Group	Week 44 Cases	Week 44 Rate [‡]	2021-22* Season-to-Date	2021-2022* Season-to-Date Rate [‡]
00-04	10	2.67	41	10.95
05-24	15	0.93	69	4.30
25-49	17	0.89	60	3.14
50-64	5	0.40	38	3.07
65+	8	0.84	35	3.67
Total	55	0.90	243	3.99

[†]Laboratory-positive influenza includes the following test methods: rapid influenza diagnostic tests (antigen), reverse transcriptase polymerase chain reaction (RT-PCR) and other molecular assays, immunofluorescence antibody staining (Direct (DFA) or Indirect (IFA)), or viral culture.

^{*}Influenza season begins week ending October 3, 2020 (CDC Week 40) Data Source: Missouri Health Information Surveillance System (WebSurv)

[‡]Incidence Rate per 100,000 population

Figure 3. Number of Laboratory-positive[†] Influenza Cases and Case Rates by Region, Missouri, CDC Week 44 (October 31, 2021 – November 6, 2021)^{}**

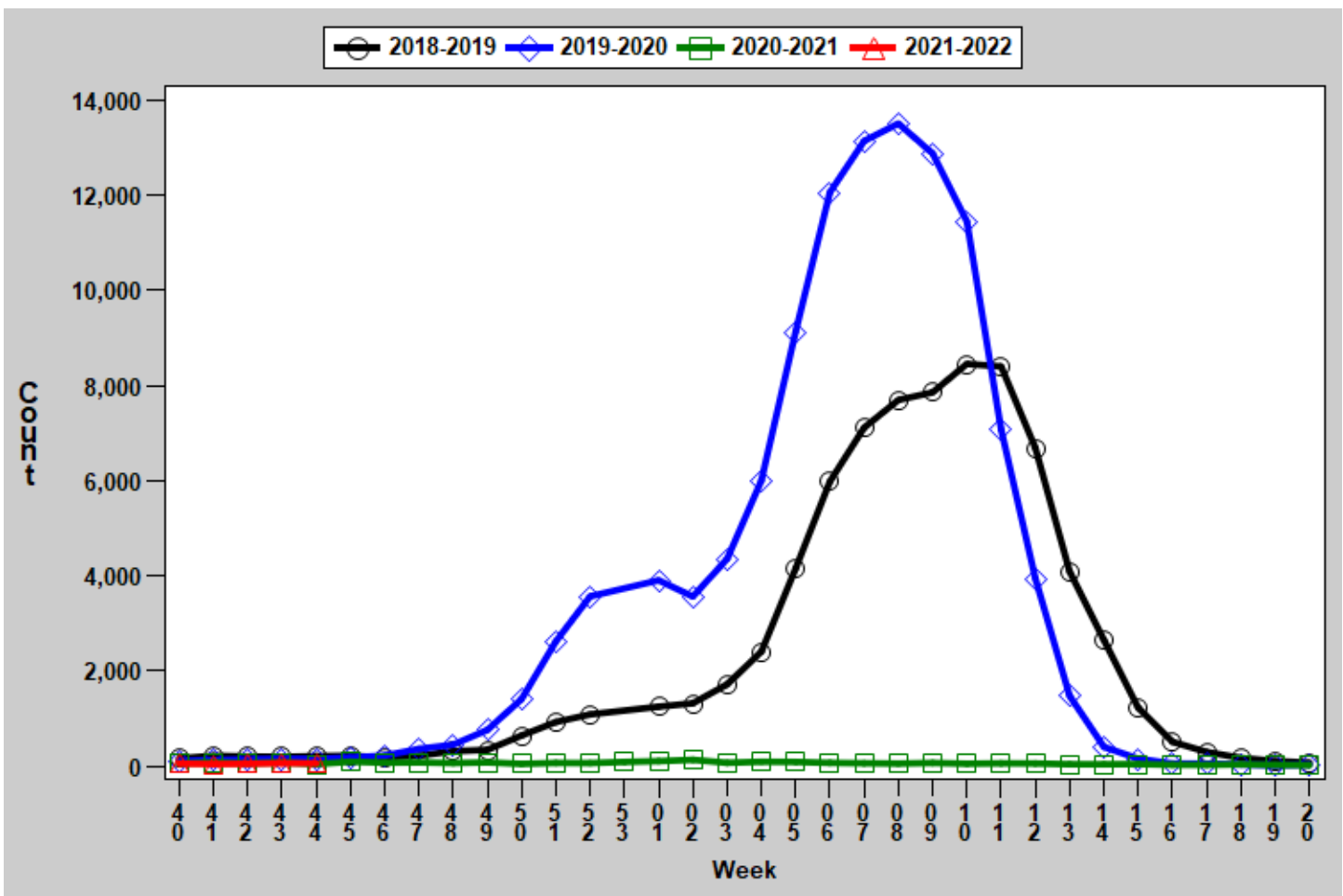
Region	Week 44 Cases	Week 44 Rate [‡]	2021-22* Season-to-Date	2021-22* Season-to-Date Rate [‡]
Central	0	0.00	39	5.76
Eastern	24	1.06	78	3.44
Northwest	6	0.38	33	2.07
Southeast	9	1.91	36	7.63
Southwest	16	1.49	57	5.32
Total	55	0.90	243	3.99

[†]Laboratory-positive influenza includes the following test methods: rapid influenza diagnostic tests (antigen), reverse transcriptase polymerase chain reaction (RT-PCR) and other molecular assays, immunofluorescence antibody staining (Direct (DFA) or Indirect (IFA)), or viral culture.

^{**}Influenza season begins week ending October 3, 2020 (CDC Week 40) Data Source: Missouri Health Information Surveillance System (WebSurv)

[‡]Incidence Rate per 100,000 population

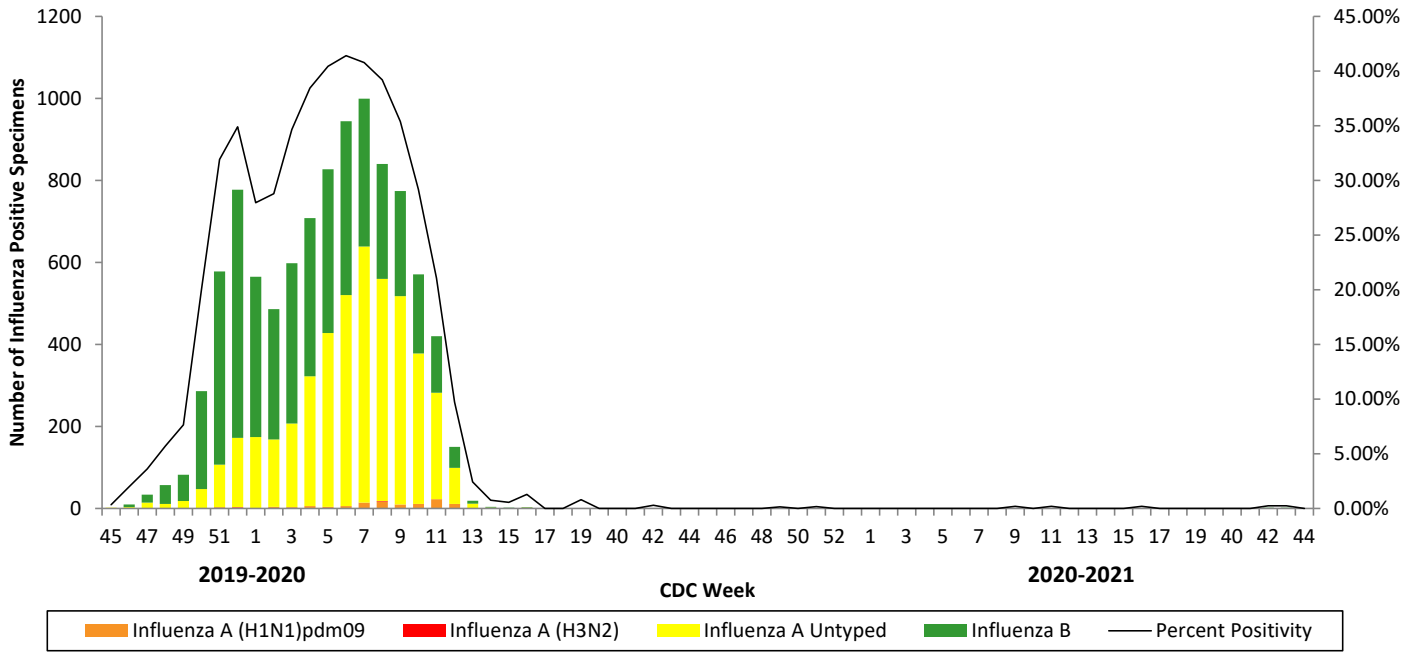
Figure 4. Number of Laboratory-positive[†] Influenza Cases by CDC Week, Missouri, 2018-2022^{*}



[†]Laboratory-positive influenza includes the following test methods: rapid influenza diagnostic tests (antigen), reverse transcriptase polymerase chain reaction (RT-PCR) and other molecular assays, immunofluorescence antibody staining (Direct (DFA) or Indirect (IFA)), or viral culture.

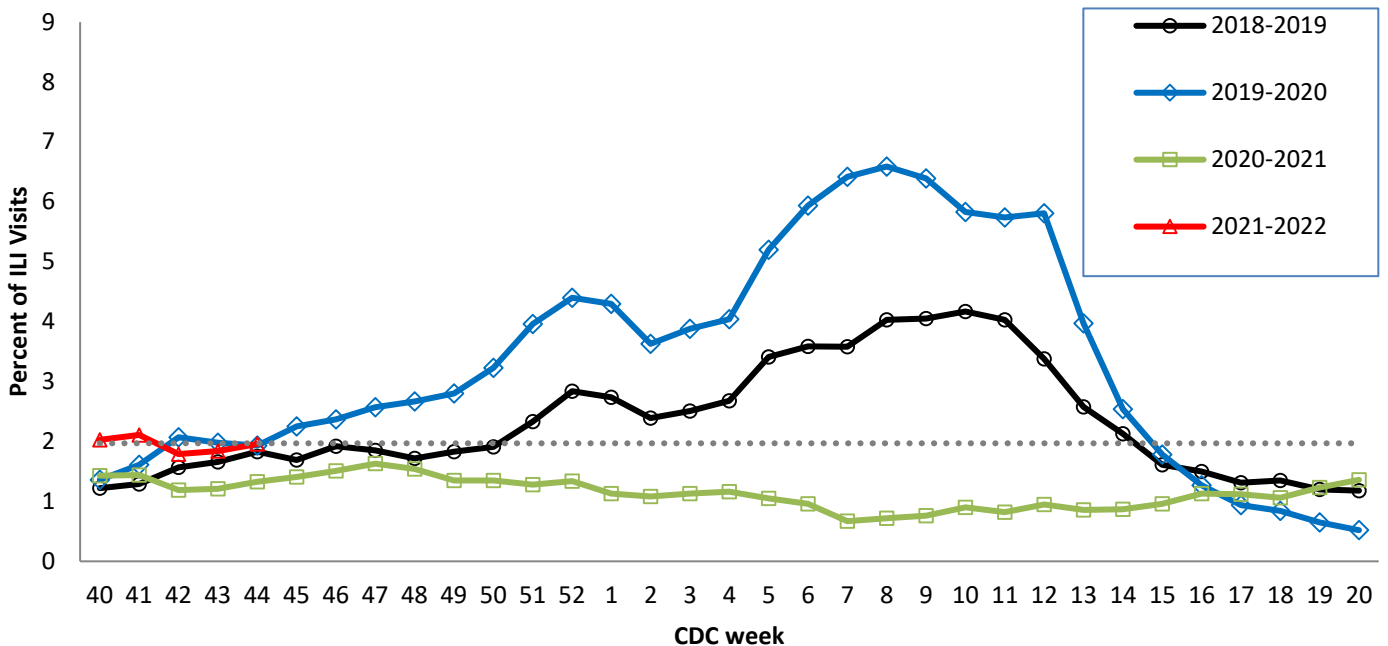
^{*}2021-2022 season-to-date through the week ending May 21, 2022 (Week 20).Data Source: Missouri Health Information Surveillance System (WebSurv)

Figure 5. Season-to-Date PCR (+) Tests for Influenza in Missouri



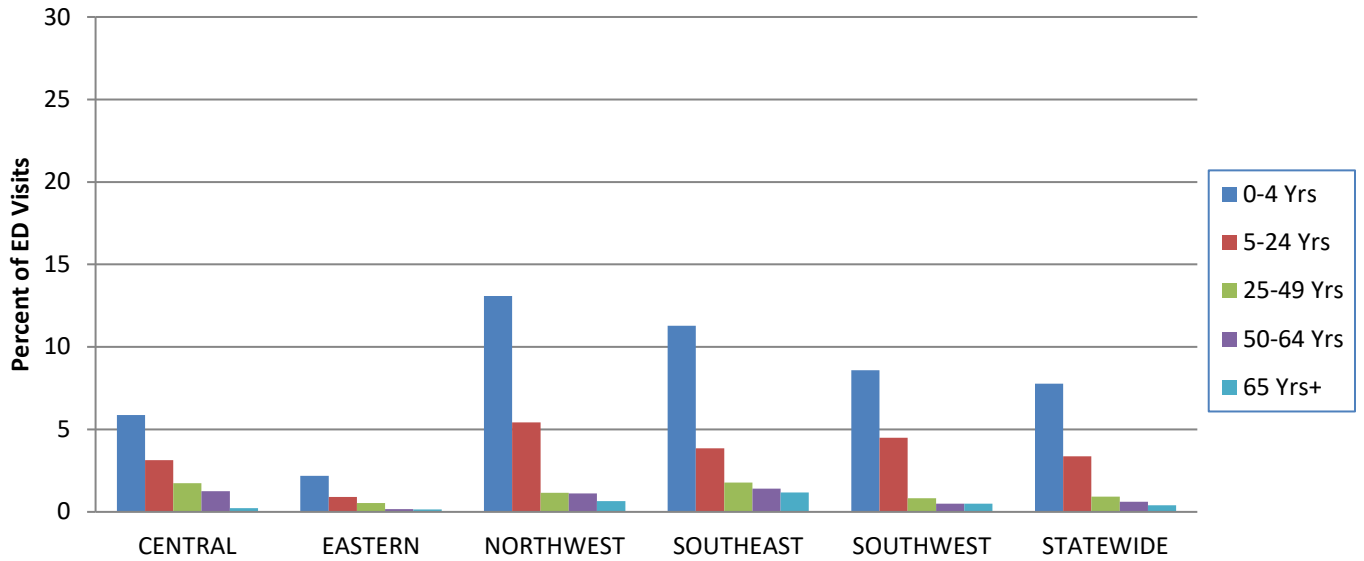
Data Source: National Respiratory and Enteric Virus Surveillance System (NREVSS), Centers for Disease Control and Prevention (CDC). 2021-2022 season-to-date through the week ending November 6, 2021 (Week 44).

Figure 6. Percentage of Emergency Department (ED) Visits for Influenza-like Illness (ILI) in ESSENCE Participating Hospitals, 2018-2021 Influenza Seasons**



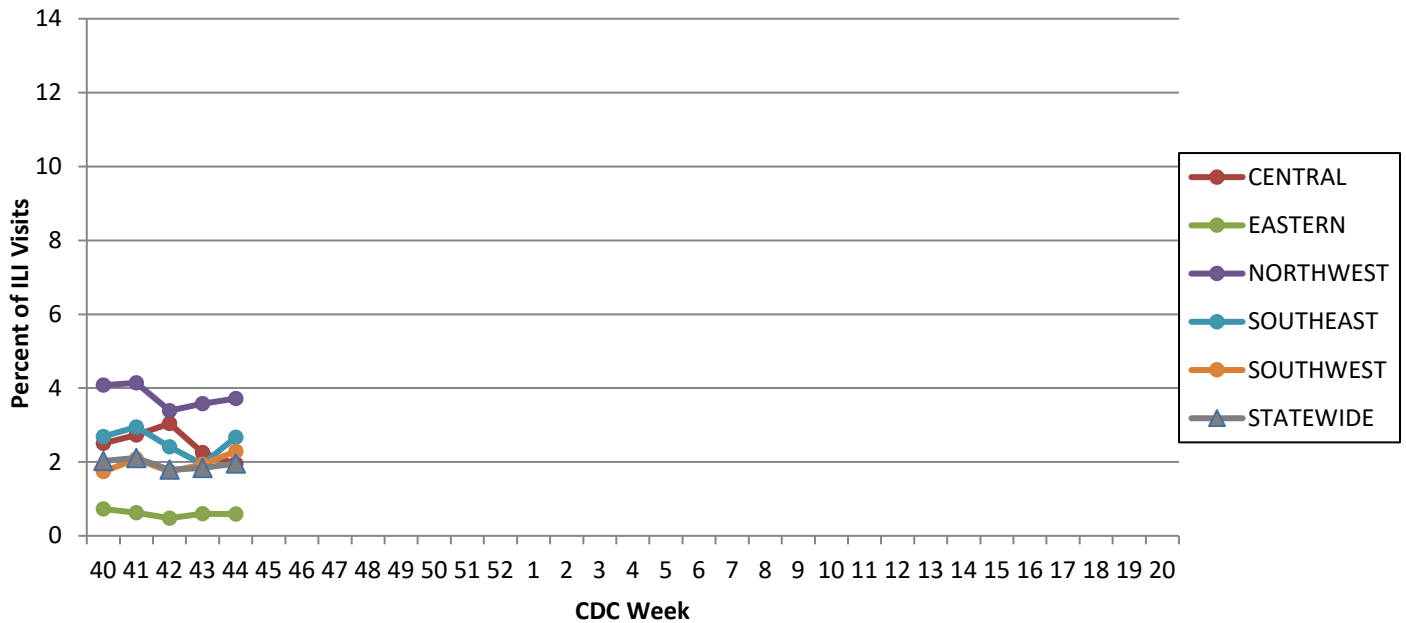
**The ESSENCE ILI Baseline is the mean percent of ILI visits for each week during the previous three flu seasons when percentage of ILI visits were less than 2% of total visits, plus two standard deviations. Data Source: Missouri Department of Health and Senior Services (DHSS), Bureau of Reportable Disease Informatics, ESSENCE version 1.20.

Figure 7. Percentage of Emergency Department (ED) Visits for Influenza-like Illness (ILI) in ESSENCE Participating Hospitals, by Age Group, Region and Statewide, Week 44, 2021*



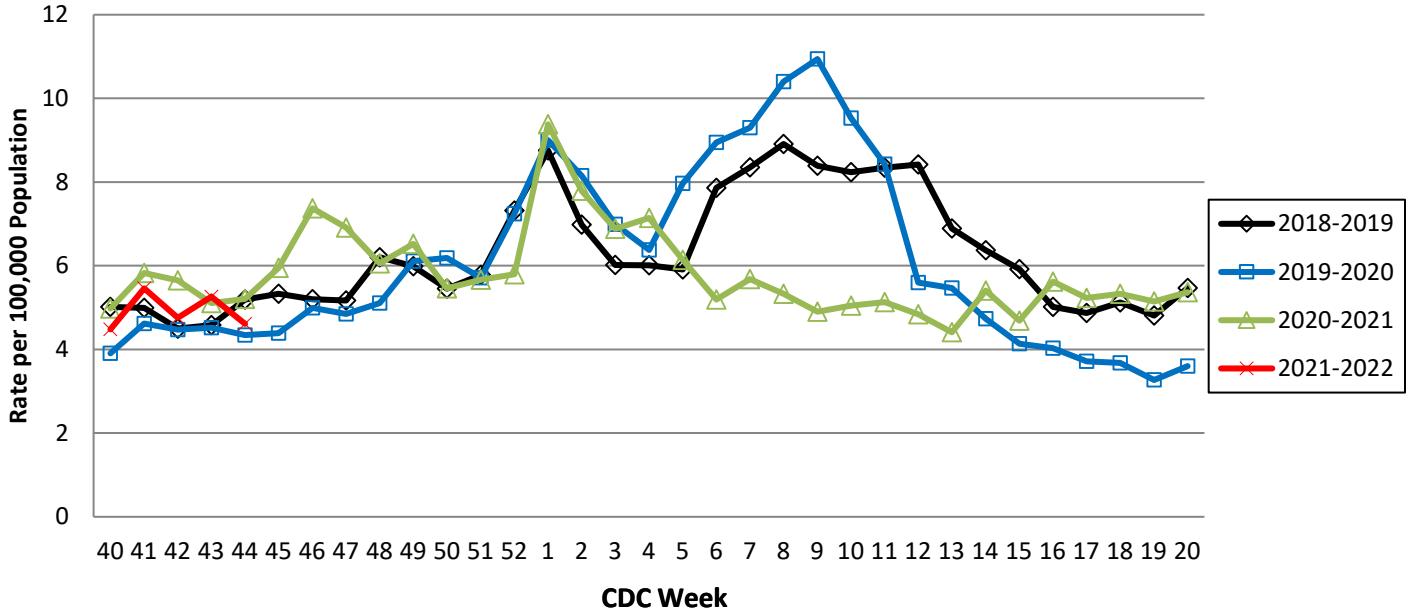
Data Source: Missouri Department of Health and Senior Services (DHSS), Bureau of Reportable Disease Informatics, ESSENCE version 1.20.
 *The ILI data from a small number of sites located in the Northwest Region of the state is temporarily unavailable in ESSENCE. Therefore, the ILI data for the Northwest Region should be interpreted with caution.

Figure 8. Percentage of Emergency Department (ED) Visits for Influenza-like Illness (ILI) in ESSENCE Participating Hospitals, by Region and Statewide, 2021-2022 Influenza Season*



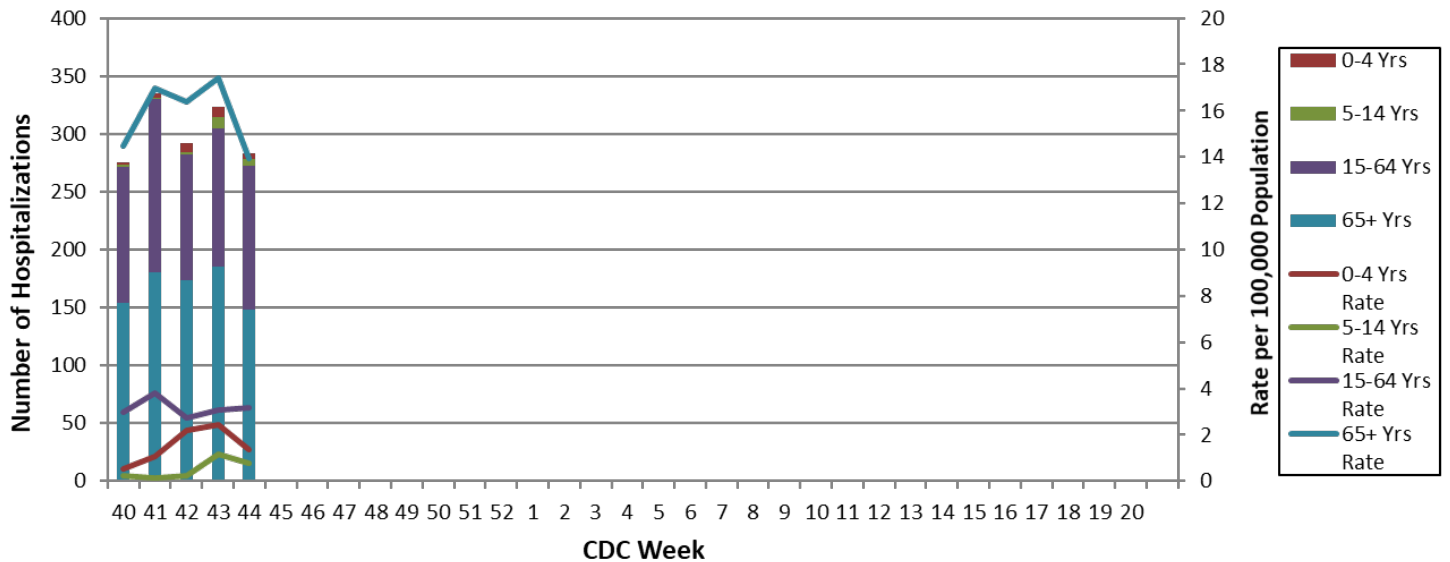
Data Source: Missouri Department of Health and Senior Services (DHSS), Bureau of Reportable Disease Informatics, ESSENCE version 1.20.
 *The ILI data from a small number of sites located in the Northwest Region of the state is temporarily unavailable in ESSENCE. Therefore, the ILI data for the Northwest Region should be interpreted with caution.

Figure 9. Weekly Rate of Patients Hospitalized with Influenza and/or Pneumonia Syndromes in Missouri Hospitals, 2018-2021 Influenza Seasons



Data Source: Missouri Department of Health and Senior Services (DHSS), Bureau of Reportable Disease Informatics, HL7 Messaging Portal. Population data from Missouri Census Data Center 2017 (<https://census.missouri.edu>).

Figure 10. Number of Patients Hospitalized with Influenza and/or Pneumonia Syndromes in Participating Missouri Hospitals, by Age Group, Week 44, 2021-2022 Influenza Season



Data Source: Missouri Department of Health and Senior Services (DHSS), Bureau of Reportable Disease Informatics, HL7 Messaging Portal.

Additional Influenza Data Sources:

Centers for Disease Control and Prevention: National Influenza Surveillance (FluView):
<http://www.cdc.gov/flu/weekly/fluactivitysurv.htm>

The National Respiratory and Enteric Virus Surveillance System (NREVSS):
<https://www.cdc.gov/surveillance/nrevss/>

World Health Organization: International Influenza Surveillance:
http://www.who.int/influenza/surveillance_monitoring/en/